

Name of Property	Padma Resort Bali at Legian	
Address	Jl. Padma No. 1, Legian 80361 PO Box 1107 TBB Bali, Indonesia	
Phone Number	+62 361 752 111	
Fax Number	+62 361 752 140	
Website	www.padmahotels.com	
Opening Date	15 September 1990	
Padma Hotels & Resorts Offices	Jakarta Sales Office Blok G 4, Wijaya Graha Puri Jl. Wijaya II, Jakarta 12160 Indonesia T. + 62 21 720 2859 F. + 62 21 722 0506 E. js@padmahotels.com	Japan Sales Office Mac Marketing Services #402 Claire SHIBA, 4-5-15 Shiba Minato-ku, Tokyo 108-0014 Japan P. 03-5419-3741 F. 03-5419-3742 E. sales@macmarketingservice.com www.macmarketingservice.com

About the Property

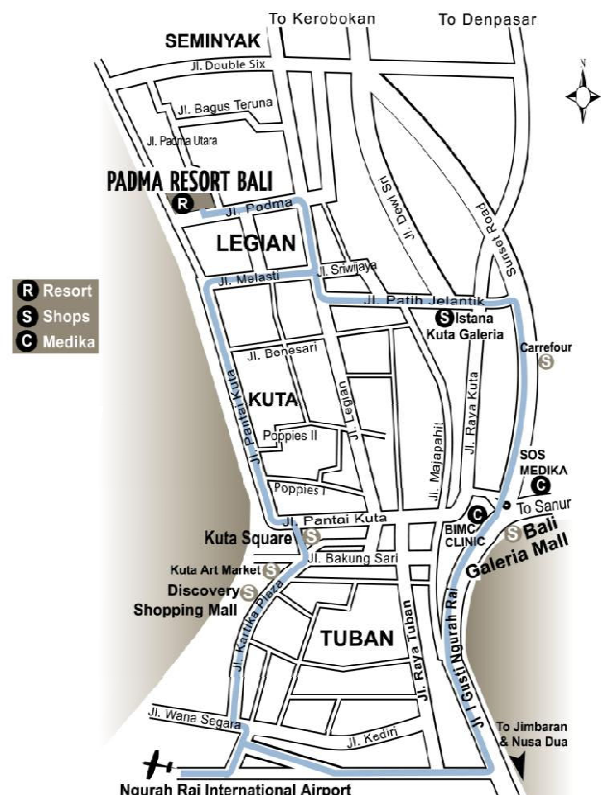
Acclaimed as a five-star art sanctuary, Padma Resort Bali is a serene paradise under the dancing shadow of the renowned Legian sunset. Just step away from the traditional art and fashion market of Legian street, the resort is a sanctuary at one with nature. Encompassed within 6.8 hectares of tropically landscaped garden, Padma Resort Bali at Legian provides 409 comfortable guest rooms and suites, world-class facilities and the celebrated Balinese hospitality that promise wonderful stays for discerning travelers.

The spirit of Bali is palpable in the Resort’s chalet-style rooms, its open-air restaurants and wide-open spaces that are filled with lotus ponds, undulating gardens and art. The diverse array of images would please all senses; each bears sacred and magical significance, a tribute to the spirit of art.

Experience the fun of an artistic lifestyle at Padma Resort Bali.

Location

- 6 km from Bali’s Ngurah Rai International airport
- 2 km from Kuta centre
- 12 km from Denpasar
- 5 minute walk from local shops and boutiques
- 10 minute walk from lively evening entertainment
- 10 minute walk from fine dining restaurants



Room Category and Description

**Deluxe Room
(65 units)**

The Deluxe Room takes contemporary Balinese design to a new level of existence with a tasteful décor that explores the island’s creative heritage. Customized furnishings and unique pieces of artistry offset the clean line of light-colored flooring. A full length mirrored door slides open to reveal a spa-styled bathroom with an indulging egg-shaped tub and separate shower recess. A private balcony completes this well-appointed room category.

Maximum occupancy: 3A(Adults)/ 2A(Adults) 1C(Child) / 1A(Adult) 2C(Children)*

**Deluxe-Lagoon View Room
(65 units)**

With a stunning view of 104 meter lagoon styled swimming pool from the private balcony, the Deluxe-Lagoon View Room takes contemporary Balinese design to a new level of existence with a tasteful décor that explores the island’s creative heritage. The contemporary style with a Balinese touch adds to the unique interior of the room. The plush and sumptuous linens ensure a quality sleeping after indulging in the egg-shaped tub or separate rain shower.

Maximum occupancy: 3A(Adults) / 2A(Adults) 1C(Child) / 1A(Adult) 2C(Children)*

**Deluxe Chalet
(146 units)**

The Deluxe Chalet is a charming room category that draws attention to the aesthetics of modern Balinese artistry. Designed for comfort as well as privacy, it is a restful environment that soothes the senses following days spent experiencing the island. Each room has its own private balcony to sit and appreciate the gentle whisper of the evening sea breeze. Day bed is available in some rooms.

Maximum occupancy: 3A(Adults) / 2A(Adults) 1C(Child) / 1A(Adult) 2C(Children)*

FLOOR PLAN DELUXE ROOM



FLOOR PLAN DELUXE LAGOON VIEW ROOM



**Premier Room
(24 units)**

This spaciouly appointed ground floor room was purposely designed to anticipate the needs of guests traveling with children. It features a private terrace with a tropical garden view. The Premier Room showcases distinct aspects of modern Balinese artistry balanced by necessary home comforts and conveniences. The luxury bathroom comes with a separate shower and egg-shaped tub for spa-styled bathing indulgence.

Maximum occupancy:
3A(Adults)/ 2A(Adults) 1C(Child / 1A(Adult) 2C(Children up to 12 years old) / 2A(Adults) 2C(Children up to 12 years old) / 1A(Adult) 3C(Children up to 12 years old)**



**Garden Club Chalet
(64 units)**

This room category with its private terrace and serene garden views celebrates contemporary Balinese design. A warm décor in earthy tones is balanced by pieces of original artistry to set the mood for some well-deserved holiday relaxation. Guests are entitled to exclusive access to the Garden Club Lounge to enjoy an array of special privileges. Day bed is available in all rooms.

Maximum occupancy: 3A(adults) / 2A (adults) 1C (Child) /1A (adults) 2C (Children)*



**Lagoon Access Room
(22 units)**

The privilege of direct terrace access to the crystal clear waters of a tropical lagoon is an exclusive feature of this new room category. Light-coloured flooring together with Balinese inspired design elements add to the luxury of this restful environment. The en-suite bathroom with its egg-shaped tub and separate shower recess is the ultimate in personal indulgence. The Lagoon Access Room is all about living for the moment – Bali style. Guests are entitled to exclusive access to the Garden Club Lounge to enjoy an array of special privileges.

Maximum occupancy: 3A(Adults) / 2A(Adults) 1C(Child) / 1A(Adult) 2C(Children)*

Minimum age of Children allowed in Lagoon Access Room is 6 years old



**Premier Club Chalet
(12 units)**

An intimate haven for honeymooners, the Premier Club Chalet is all about sharing quality time with a loved one. The suite cocoons couples from the outside world with its indulging king-sized bed and crisp white linen. It also features a luxurious bathroom with his & her vanities, a separate rain shower and generous bathtub for romantic moments together. Garden Club Lounge special benefits apply to guests staying in this room category.

Maximum occupancy: 3A(Adults) / 2A (Adults) 1C (Child) / 2A (Adults) 2I (infants up to 4 years old) / 1A (Adults) 2C (Children)*

Some are spaciouly appointed ground floor rooms with a garden terrace and comfortable daybed sheltered by native flora. This elegant room category embodies modern Balinese design through its distinct décor and luxury amenities. It is the perfect retreat for honeymooners or couples seeking a little extra privacy. Garden Club Lounge entitlements are applicable.

Maximum occupancy: 3A(Adults) / 2A(Adults) 1C(Child) / 1A(Adult) 2C(Children)*

FLOOR PLAN PREMIER CLUB CHALET



**One Bedroom Balcony Suite
(2 units)**

This modern suite embraces the healthy attributes of a tropical lifestyle with an extended open-air balcony to relax in the sun. The king-sized bedroom invites nights of restful slumber with its plush linen and mood enhancing décor. A separate living room is infused with natural daylight and can accommodate another adult guest or one child in complete comfort without compromising privacy. Access to the Garden Club Lounge is just one of the benefits of staying in this room category.

Maximum occupancy: 3A(Adults) / 2A(Adults) 1C(Child) / 1A(Adult) 2C(Children)*

FLOOR PLAN BALCONY SUITE ONE-BEDROOM



**Deluxe Suite
(6 units)**

The Deluxe Suite is a sophisticated retreat for travelers who enjoy the finer pleasure that life has to offer. This contemporary open-plan environment seamlessly integrates sleeping and living quarters yet creates a distinct feeling of privacy through strategically placed furnishings. It also features a dining area for personal use. An airy balcony with a cozy daybed offers refreshing views of tropical greenery. Garden Club Lounge benefits also apply.

Maximum occupancy: 3A(Adults) / 2A(Adults) 1C(Child) / 1A(Adult) 2C(Children)*

FLOOR PLAN DELUXE SUITE



**Two Bedroom Balcony Suite
(2 units)**

Balcony Suite- Two bedroom is specially designed for those who love indulgence in any ways. With comfortable living area overlooking the outdoor greenery in the main room, this room type is ideal for families looking to spend some quality time. The connecting room has twin single beds (120x200 cm) with separate egg-shaped bath and shower area. Feel the Balinese breeze while experiencing the privacy of a Grande balcony in a tropical setting.

Maximum occupancy: 6A (Adults) / 4A (Adults) 2C(Child) / 2A(Adult) 4C(Children)***



**Presidential Suite Villa
(1 unit)**

This exclusive three-bedroom villa, complete with tastefully appointed living room, bar and service kitchen, is resplendent of a tropical residence. The suite's landscaped garden with its inspiring ocean views is the perfect venue to host a wedding ceremony or social gathering for up to 100 guests. The Presidential Suite is secluded from mainstream resort activity and has its own private swimming pool. The guest will benefit of 24-hour butler service as well as Garden Club Lounge privileges.

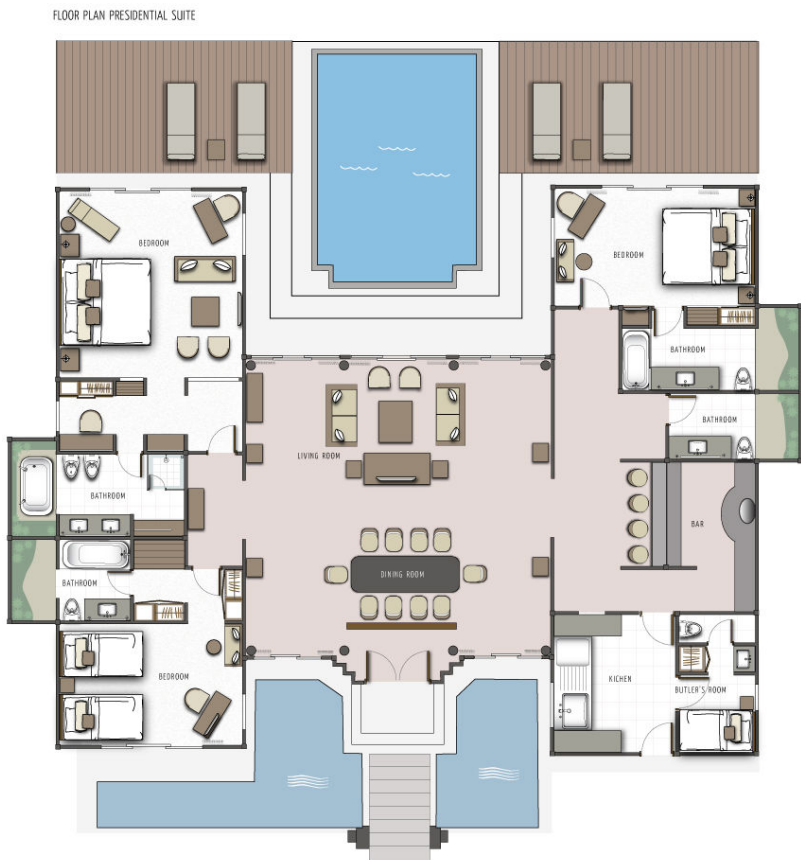
Maximum occupancy: 9A(Adults) / 6A(Adults) 3C(Children)****

*) Additional charge will be applicable for the third person.

**) Additional charge will be applicable for the third and fourth person in Premier Room

***) Additional charge will be applicable for the fifth and sixth person in Balcony Suite-Two Bedroom

****) Additional charge will be applicable for the seventh, eighth, and ninth person in Presidential Suite Villa



PADMA RESORT BALI AT LEGIAN ACCOMMODATIONS TABLE

ROOM TYPE	ROOM SIZE (sqm)	BED CONFIGURATION		TOTAL (units)	CONNECTING ROOM (units)
		TWIN	DOUBLE		
DELUXE ROOM (DLX)	38	34	31	65	31
DELUXE LAGOON VIEW ROOM (DLV)	38	34	31	65	31
DELUXE CHALET (DC)	43.8	68	78	146	25
PREMIER ROOM (PR)	44.3	12	12	24	12
GARDEN CLUB CHALET (GCC)	43.8	19	45	64	13
LAGOON ACCESS ROOM (LGA)	42	10	12	22	10
PREMIER CLUB CHALET (PCC)	52.42		6	6	
PREMIER CLUB CHALET (PCC)	59		6	6	
ONE BEDROOM BALCONY SUITE (BS1)	95.5		2	2	2
DELUXE SUITE (SDS)	106.3		6	6	6
TWO BEDROOM BALCONY SUITE (BS2)	141.3		2	2	2
PRESIDENTIAL SUITE (PS)	338.6	1	2	1	
TOTAL		178	233	409	132

Guest Rooms' Features:

- Private balcony/terrace.
- Private bathroom with separate shower and bath (*a few Deluxe Chalets have attached shower on the Bathtub*).
- Individually controlled AC.
- IDD telephone.
- Shaver outlet and adaptors.
- Television with international Channels.
- Hairdryer.
- Slippers.
- Coffee/tea making facilities.
- Bathrobes & Yukata for Lagoon Access Rooms, Club rooms and Suites.
- Safety box.
- Bedside control panel.
- Computerized key card.
- Private DVD player.
- Complimentary Internet connection.
- Iron & Ironing board in all chalet rooms and suites*.
- Radio Alarm Clock.
- Voltage: 220 volts; 10-16 ampere; 50 Hz; number of prongs 2 poles with the earth

**) Iron and Ironing board are available on request for all other room types.*

Services & Facilities:

- Laundry/dry clean (07.00-19.00).
- Pillow Menu
- 24-hour on call doctor.
- In-house clinic.
- 24-hour Room Service.
- Multilingual staff.
- Car rental.
- Car park.
- Tour and travel counters.
- Foreign exchange.
- Sarasvati Retail Shop (08.00-22.00).
- The Beach Shop (09.00-18.00).
- Mail and postage services.
- Lotus Beauty Salon (10.00-19.00).
- Padma Spa by Mandara (09.00-21.00).
- Wheelchairs.
- Baby-sitting service (at additional charge, Max. age: 5 years old. Advance booking is required).
- Wake-up Call.
- Free WiFi service on all areas Within premise.
- Departure Lounge (12.00 – 21.00).
Facilities: Wifi connection, television, newspapers, magazines, coffee, tea, and Mineral water. Shower, steam, sauna available at the Adjacent Fitness Center.

Sports & Recreation:**Swimming Pools:**

- Open 07.00 – 21.00.
- Adult pool size: 45 m x 25 m. Depth 1.45m-1.75m
- Children pool size: 25 m x 6 m. Depth 60cm
- Lagoon pool size: 1000 sqm. Lagoon pool depth 1.4m
- Children Lagoon pool size: 64sqm
- Children Lagoon pool depth 60cm
- Daily Pool Activity Programs.

Tennis courts:

- Open 07.00 – 21.00.
- Free for in-house guests.
- Hitting partner*.
- Racket/Tennis balls*.

Fitness Centre:

- Open 06.30 – 21.00.
- Separate steam and sauna facilities for male and female guests.
- Personal training program*.

Yoga Class:

- Regular class
Tuesday & Friday
at 08.00-09.00.
- With minimum of two people, classes can be organized on other days at the same hour (one day advance booking is required)*.

Wolly Kids Club & Games Centre:

- Open 09.00 – 20.30.
- Wolly Kids Club for children age 2 to 9 years old.
- Wolly Games Centre for children age 10 to 17 years old.
- Daily Kids Activities Program. Kids party available every Saturday from 18.30 – 20.30*.
- Baby-sitting service is available for younger children*.

**) Additional charge applies.*

PADMA RESORT BALI AT LEGIAN RESTAURANTS SEATING CAPACITY & OPENING HOURS

NO	OUTLETS	CAPACITY-SEATS	OPENING HOURS	REMARKS
1.	Taman Ayun Café & Lounge	Lounge : 48 seats Café : 194 seats The Pavilion : 60 seats Total : 302 seats	06.30–23.00 Buffet Breakfast:06.30–10.30 Lunch : Closed Dinner : 18.00-23.00 Last order : 22.30	International Cuisine with nightly live entertainment.
2.	Bella Rosa Italian Restaurant	Restaurant : 32 seats Terrace :17 & 48 seats Total : 97 seats	07.00-23.00 Breakfast : 07.00-10.00 Lunch : Closed Dinner : 17.00-23.00 Last order : 22.30	Breakfast valid for Club rooms' & Suite rooms' guests only.
3.	Seruni Sunken Pool Bar	Restaurant : 40 seats	09.00-20.00 Happy Hours : 14.30-16.00 Last order : 18.45 food	Sandwiches, Burger, Salad, Pizza and Drinks.
4.	The Deli	Restaurant : 35 seats Terrace : 28 seats Total : 63 seats	07.00-01.00 All day dining : 11.30-23.00 Last order : 00.45	The Deli Menu, Coffee, Cakes, Sandwiches, Free WiFi
5.	The Barong Pool Bar and Café	Restaurant : 38 seats	09.00 – 20.00 Lunch : 11.30-17.00 Happy Hours : 14.30-16.00 Last order : 18.45 food	Sandwiches, Burgers, Salad & Drinks
6.	Sunset Bar	Bar : 100 seats	17.00-22.00 Happy Hours : 17.00 - 19.00 Last order : 22.00	Tapas menu available from 17.00 – 19.00 hrs
7.	Tenkai Japanese Restaurant	Teppanyaki : 21 seats Restaurant : 40 seats Total : 61 seats	18.00-23.00 Last order A la carte menu : 22.10 Teppanyaki menu : 20.15 Buffet : 21.30	Table at pool side for Buffet is available upon request and subject to weather conditions, Free WiFi is available
8.	Room Service		24 hours	

THEMED DINNERS AT PADMA RESORT BALI AT LEGIAN

DAY	FUNCTION	ENTERTAINMENT	OPENING HOURS	MENU
MONDAY	FLAVOURS OF ITALY Bella Rosa Italian Restaurant	Quartet Stroller	18.00 - 21.30	Italian Buffet
	TEPPANYAKI NIGHT Tenkai Japanese Restaurant	Background Music	Teppanyaki 1 st seating :18.00-20.00 2 nd seating : 20.15-22.30 A la carte : 18.30-22.30	Teppanyaki & a la Carte
TUESDAY	JAPANESE BUFFET DINNER Tenkai Japanese Restaurant	Background Music	18.30 - 21.30	Japanese Buffet
	BALINESE BUFFET Taman Ayun Café & Lounge	Background Music	19.00 - 21.00	Balinese cuisine
WEDNESDAY	FLAVOURS OF ITALY Bella Rosa Italian Restaurant	Quartet Stroller	18.30 - 21.30	Italian Buffet
	TEPPANYAKI NIGHT Tenkai Japanese Restaurant	Background Music	Teppanyaki 1 st seating :18.00-20.00 2 nd seating : 20.15-22.30 A la carte : 18.30-22.30	Teppanyaki & a la Carte
THURSDAY	JAPANESE BUFFET DINNER Tenkai Japanese Restaurant	Background Music	18.30 - 21.30	Japanese Buffet
FRIDAY	TEPPANYAKI NIGHT Tenkai Japanese Restaurant	Background Music	Teppanyaki 1 st seating :18.00-20.00 2 nd seating : 20.15-22.30 A la carte : 18.30-22.30	Teppanyaki & a la Carte
	TROPICAL BBQ BUFFET DINNER Pool Side	Kecak Fire & Quartet Stroller	19.00 - 21.30	BBQ Buffet
SATURDAY	TEPPANYAKI NIGHT Tenkai Japanese Restaurant	Background Music	Teppanyaki 1 st seating :18.00-20.00 2 nd seating : 20.15-22.30 A la carte : 18.30-22.30	Teppanyaki & a la Carte
	FLAVOURS OF ITALY Bella Rosa Italian Restaurant	Live DJ	18.30 - 21.30	Italian Buffet
SUNDAY	JAPANESE BUFFET DINNER Tenkai Japanese Restaurant	Background Music	18.30 - 21.30	Japanese Buffet
	ROAST BUFFET DINNER Taman Ayun Café and Lounge	Smart Band	18.30 - 21.30	Assorted Roast Meats

Themed Dinner at Padma Resort Bali at Legian are complimentary for children up to 6 years old (accompanied by parents), & discount 50% for children up to 12 years old.

Theme Dinner prices, schedules and venues may change from time to time without prior notice.

WEDDINGS AT PADMA RESORT BALI AT LEGIAN

Celebrate your wedding with an unforgettable day of cherished memories at Padma Resort Bali at Legian. We offer packages to meet every expectation, each has been carefully designed to suit every couple's preference, whether it is romantic, simple or lavish.

Our Wedding Packages

Sunset Vows

Celebrate your vow renewal in an intimate set up at our exclusive venues.

Start from US\$ 1,000++ (in-house guest), US\$ 1,500++ (non in-house guest)

Stylish Sunset

Simple yet stylish, this package is all about embracing the moment.

Start from US\$ 1,800++ (in-house guest), US\$ 2,500++ (non in-house guest)

Elegant Sunset

Offers an unforgettable day of pure elegance shared with family and friends to treasure always.

Start from US\$ 4,900++

Royal Sunset

This exclusive package honors the grandeur of your precious day.

Start from US\$ 7,600++

Inclusive in the packages, we offer a selection of venues that couples can choose from to celebrate this most important moment. The venues include The Pool Grass Lawn with the view of the Indian Ocean; The Wedding Place, which is surrounded an exotic garden of tropical greenery, the Presidential Suite Villa comes with its own garden and private pool, Candi Bentar has a majestic Balinese gate and the Wantilan Ballroom which is a stylish indoor venue.

For further information, please email: nancy.sadeli@padmaresortbali.com

**) Legal ceremony that includes Minister of Religion & Civil Registration can be arranged at an additional charge.*

**) Customized setup available*

MEETINGS AT PADMA RESORT BALI AT LEGIAN

Whether it is a meeting, corporate gathering, presentation or team-building event, Padma Resort Bali at Legian is the perfect location to mix business with pleasure.

Full-day meeting (up to 9 hours) : US\$ 65 ++/person/day

Half-day meeting (up to 5 hours) : US\$ 60 ++/person/day

Package is inclusive of:

- Use of a fully air-conditioned meeting room.
- Comfortable setup (U-shape, class room, oblong table, round/square table, theater style, etc)
- Standard meeting equipment: 1 LCD Projector with screen, 1 flip chart, 1 white board & 3 color markers, 2 microphones
- Choice of creative morning and afternoon breaks with a range of beverages and light finger food
- Meeting amenities (notepads and pens)
- Bottled mineral water and mints during the meeting
- Buffet lunch
- Free of Charge Wi-Fi Connection

Terms & Conditions:

- All of the above rates are valid for a group of minimum 30 participants
- All of the above rates are subject to 21 % government tax and service charge
- All of the above rates are subject to change without prior notice

Dinner price starts from:

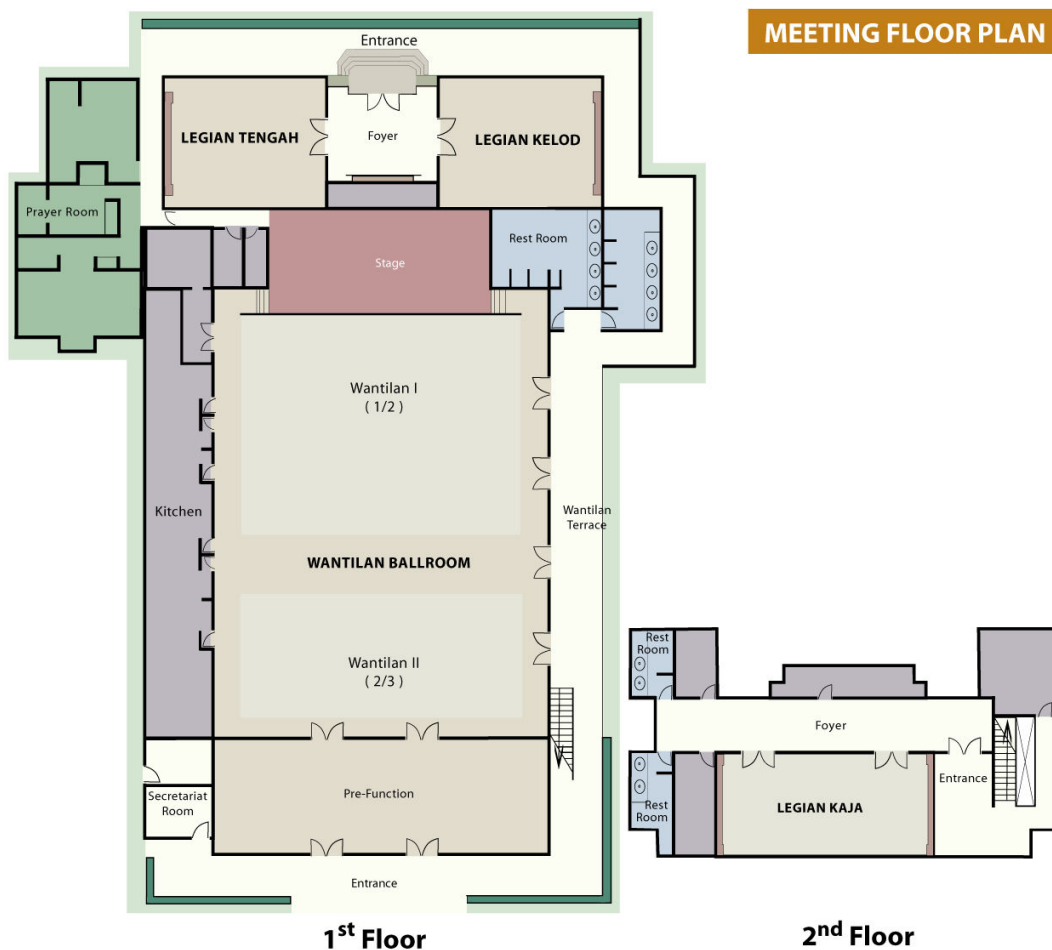
- With entertainment : US\$ 50 ++ /person
- Without entertainment : US\$ 40 ++ /person

Rates are inclusive of:

- Dinner venue
- Standard Balinese decoration
- Standard dinner set-up equipment
- Entertainment: Cultural dance

Other facilities:

- Extended use of the meeting room will be charged at US\$ 100 ++/hour
- There is an additional charge for additional break out rooms
- Additional meeting facilities and equipment such as interpreter services, secretarial services, video conference facility, teleconference facility, delegates conference, and others are available upon request at extra cost
- Additional dinner entertainment such as full band, keyboard & singer, quartet group, modern dances, magician, and others are available upon request at extra cost
- A selection of menu, alcoholic beverage and wines are available upon request at extra cost.



CAPACITIES

Convention Hall- Ballroom	L (m)	W (m)	H (m)	Dimension square m	"U" Shape	Double "U"	Oblong Shape	Class Set up	Theatre Set up	Round table		Standing Cocktail
										Buffet	Meeting	
Ground Floor												
Stage	5	11	6.5	55	–	–	–	–	–	–	–	–
Wantilan	27	18	7.5	486	90	150	100	320	700	320	270	600
Wantilan I (half)	13	18	7.5	234	50	80	60	160	300	120	100	250
Wantilan II (one third)	8.5	18	7.5	153	40	70	54	80	120	64	48	100
PRE-FUNCTION	8	19	3	152	30	–	40	70	75	–	–	90
Door & Entrance	–	1.7	2.25	–	–	–	–	–	–	–	–	–
Upper Level												
Legian Kaja	15	7.5	3.4	112.5	30	–	40	60	80	–	30	70
Foyer	21	3.5	3.4	73.5	–	–	–	–	–	–	–	80
Legian Kaja I	7.5	7.5	3.4	56.3	15	–	16	16	20	–	–	35
Legian Kaja II	7.5	7.5	3.4	56.3	15	–	16	16	20	–	–	35
Room Legian Tengah	9.7	6.4	3.3	62	15	–	20	20	45	–	–	60
Room Legian Kelod	9.7	6.4	3.3	62	15	–	20	20	45	–	–	60
PRE-FUNCTION	4.5	6.7	3.2	30	–	–	–	–	–	–	–	15